



# Sliding Gate Operator

**DC MOTOR**

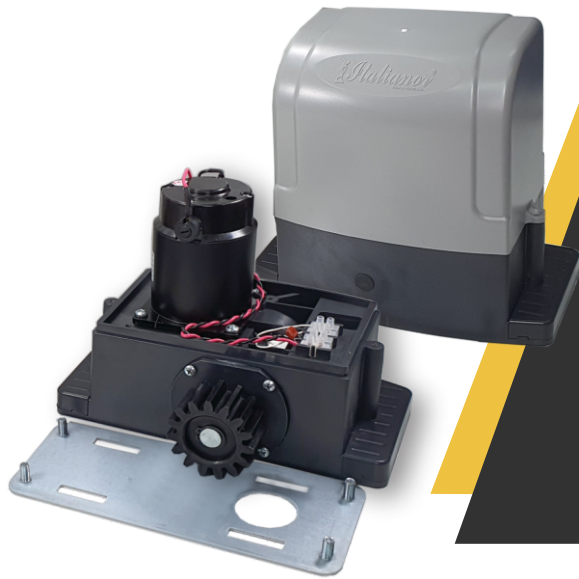
**AC MOTOR**



**GM738**

**C9**

**L200B**



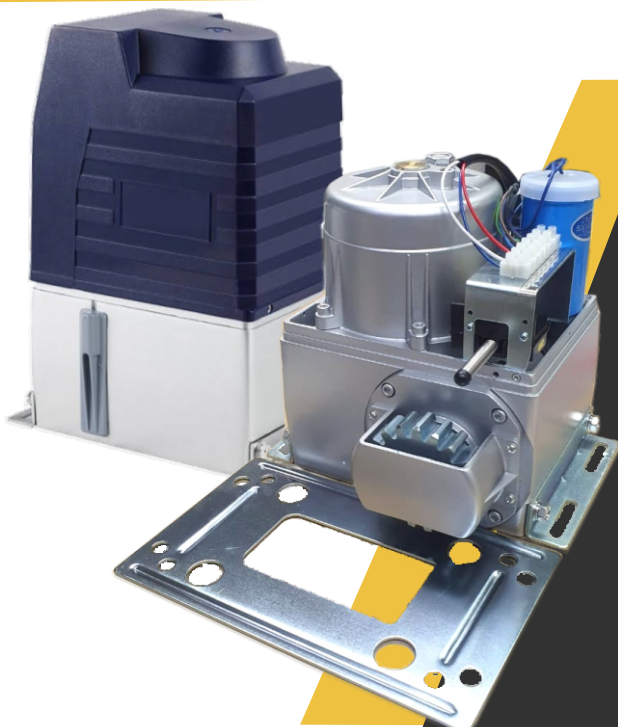
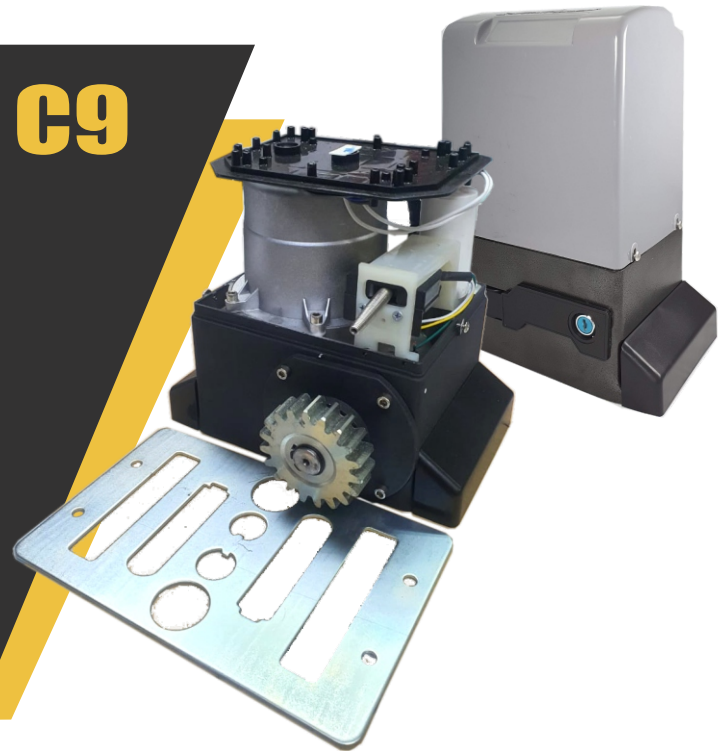
**Technical Specifications:**

Model	:	GM738
Operating Voltage	:	DC24V Normal Speed DC12V Cushioning Speed
Motor Rotation Speed	:	3500 RPM
Gate Speed	:	15 metre/min
Max Weight of Gate	:	600kg
Operating Ambient Temperature	:	-10 °C to 40 °C
Back-up Battery	:	12v 7AH
Gear Box	:	Oil Bath / Grease
Protection Class	:	IP55
Body Material	:	Plastic
Safety Clutch	:	Electronic Counter Technology Auto Reverse
Manual Optional	:	Special Release Key for Manual Operate
Dimension	:	27 x 18 x 25 cm

**Technical Specifications:**

Model	:	C9
Operating Voltage	:	AC 220V~240V
Motor Rotation Speed	:	1400 RPM
Gate Speed	:	12 metre/min
Max Weight of Gate	:	800kg
Protection	:	Overheat Auto Cut-Off
Operating Ambient Temperature	:	-25 °C to 55 °C
Duty Cycle	:	10 Minutes
Gear Box	:	Grease
Material	:	Die-Cast
Limit Switch	:	Spring Limit Switch
Manual Optional	:	Clutch Release with key
Dimension	:	33 x 27.3 x 21 cm

**C9**



**L200B**

**Technical Specifications:**

Model	:	L200B
Operating Voltage	:	AC 220V~240V
Motor Rotation Speed	:	1400 RPM
Gate Speed	:	10 metre/min
Max Weight of Gate	:	1600kg
Motor Torque	:	22N·m (adjustable)
Protection	:	Overheat Auto Cut-Off
Operating Ambient Temperature	:	-10°C to 55°C
Duty Cycle	:	10 Minutes
Gear Box	:	Oil Bath
Material	:	Die-Cast
Limit Switch	:	Spring Limit Switch
Manual Optional	:	Release with Allen Screw
Dimension	:	32 x 26 x 21.2 cm